

schenckprocess



**BEMP™ Belt
Scale / Indicator**

BEMP™ Modular Single-Idler Belt Scale / Indicator

For continuous flow rates up to 15,000 tons /hour, Schenck's BEMP™ Single-Idler Belt Scale combines quality, performance, and affordability in a modular package that can be shipped from stock. Whether your conveyor uses 18" or 60" - wide CEMA idlers, the BEMP™ mounts easily to your conveyor frame using only (4) bolts. Using (2) NTEP-approved single point load cells and the Schenck INTECONT® Satus Indicator, accuracies of +/- 1% of totalized weight are possible when used on a Schenck-approved conveyor. Ethernet communication comes standard on the INTECONT® Satus Indicator with built-in web pages for viewing system operation. This enables operators to determine feed rates and totalized amounts from any location that has Internet access.

Whether you are conveying sand, gravel, crushed rock, synthetic gypsum, or some other bulk material there is a BEMP™ Single-Idler Belt Scale and INTECONT® Satus Indicator that's in stock and right for the job.

APPLICATION:

Single-idler belt scales are commonly used in belt conveying applications to continuously measure and report flow rates and totalized material amounts. Applications include:

- Measurement of throughput and/or material consumption
- Reporting of alarm conditions
- Totalizing batch weights for load-out stations

OPERATION:

"Material weight," measured by the BEMP™ Belt Scale and "belt speed" are multiplied by the INTECONT® Satus Indicator to produce a "flow rate" value. Flow rate is then integrated by the INTECONT® Satus to produce a "totalized weight" value. (NOTE: For variable speed conveyor belts, an optional speed sensor can be used in place of a belt speed parameter.)

CONSTRUCTION:

The modular BEMP™ Belt Scale features epoxy painted, mild steel construction and is suitable for use with trough or flat idlers 18" to 60" (450 mm to 1,500 mm) CEMA. Stainless steel construction is available as an option.

LOAD CELLS:

(2) NTEP-approved, single-point, stainless steel, strain gage load cells with rated capacities of 66#, 132#, 220#, 330#, or 660# (30, 60, 100, 150, or 300 kg). The load cells are mounted in compression for optimum accuracy.

ACCURACY:

+/- 1% totalized weight over a 3:1 design capacity range when installed on a Schenck-approved conveyor. **Dual-idler belt scales** with $\pm 0.5\%$ accuracy are also available.

OVERLOAD PROTECTION:

Positive mechanical stops are provided for optimum protection.

OPERATING TEMPERATURE RANGE:

+0° F to +110° F

CALIBRATION:

Via static test weights (supplied).

Specifications

**For more information,
please call the
Schenck Process Sales Department at
1-800-401-9702 or Fax: 1-262-473-6884
E-mail: mktg@schcnkamericas.com
Web site: www.schcnkamericas.com**

BEMP™ BELT SCALE / INDICATOR SPECIFICATIONS (continued)...

INSTALLATION:

The BEMP™ Belt Scale can be easily added to a new or existing belt conveyor frame as follows:

Step 1

Using the supplied drawing, drill (2) holes on each side of the conveyor frame.

Step 2

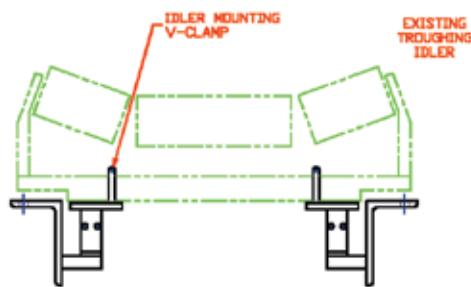
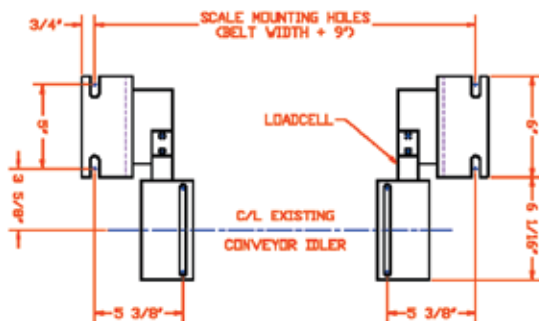
Clamp an existing conveyor idler to the BEMP™ weigh modules using the supplied "V" clamps.

Step 3

Connect the load cells to the INTECONT® Satus electronics.

Step 4

Calibrate using the supplied test weights.



Visit the Schenck Process home page at...

www.schenckamericas.com

and click on the Training button for a step-by-step BEMP™ Belt Scale installation instructional video.



INTECONT® SATUS INDICATOR:

"Simple" is the key word when describing the INTECONT® Satus belt weighing system. Industrially packaged in an IP65 stainless steel enclosure, the unit features:

- 115 or 230 VAC power source compatibility
- -22° to +140° F (-30° to +60° C) operating temperature
- Single line 0.49" (12.4 mm) LCD alpha numeric display
- User friendly, menu driven interface for programming, calibration and operation
- Internal totalizer (resettable)
- Totalizing counter output
- 4-20mA feed rate output
- Programmable alarm outputs
- Calibration data stored on load cell dongle to simplify hardware replacement
- Built-in Modbus RTU (RS485) port
- Built-in Ethernet port supporting a web server and Modbus/TCP communication
- Web pages to monitor and diagnose belt scale operation
- Optional Ethernet/IP, DeviceNet, and Profibus communication
- Optional programming software (EasyServe) for commissioning assistance and parameter backup

Schenck INTECONT® Plus and DISOCONT® Controllers can also be used with BEMP™ Belt Scales. For additional information on controls, weighfeeders, solids flow meters, vibratory screens, static bin weighing systems, or in-motion truck / train weighing systems, contact Schenck Process.



BEMP™ Belt Scale in an aggregate industry installation.