



MECHATRON® "MS" Feeder

Volumetric and gravimetric "MS" MECHATRON® Feeders feature a range of customer driven design attributes including all stainless steel construction, AC drive packages, internal agitator and helix configurations capable of feed rates up to 330 cubic feet (9,300 liters) per hour. Additionally, "MS" MECHATRON® Feeders are the only feeders with internal agitation that allow the feed hopper and helix to be removed, cleaned, serviced or reconfigured without removing the internal agitator from the feeder. "MS" MECHATRON® Feeders are especially well suited to applications involving cohesive food, pharmaceutical, chemical, and plastic materials.

MATERIALS OF CONSTRUCTION:

Contact materials –

- 304 & 316 stainless steel (feed hopper, feed screws, nozzles, and internal agitator).

Non-contact materials –

- 304 stainless steel and epoxy coated or nickel plated aluminum.

FEED RATES:

- Helix diameters from 1.38" (35 mm) to 3.5" (89 mm) provide feed rates from 0.25 to 330 cubic feet (7 to 9,300 liters) per hour (theoretical).

FEED SCREWS:

- 304 or 316 stainless steel construction.
- Single and optional twin screw open flight or center-rod configurations available.
- Full and half pitch configurations.

CONI-STEEL™ FEED HOPPER:

- Removable 70 degree (from horizontal) stainless steel conical feed hopper with or without internal agitator.
- 1.1 cubic feet (31 liters) material storage capacity.

HOPPER EXTENSIONS:

- 2.5, 7.5, and 13.2 cubic feet (75 to 375 liters) capacities.
- Dust tight 360 degree band clamp mounting.

VOLUME	INLET	VENT
75 L	6.63" (168 mm)	4.50" (114 mm)
210 L	8.63" (219 mm)	6.63" (168 mm)
375 L	8.63" (219 mm)	6.63" (168 mm)

MOTOR SPECIFICATIONS:

- Industrial applications – AC (TEFC, 1/2 and 1 HP, inverter duty).
- Sanitary applications – AC (TEFC, 1 HP inverter duty) wash-down duty configuration (optional).
- Explosion proof motors (optional).
- 230/460 VAC, 3PH, 60 Hz.

MOUNTING CONFIGURATIONS:

- Floor mount – 304 stainless steel tubular stand.
- Hanging mount – 304 stainless steel hanging flange (optional).

WEIGH MODULE SPECIFICATIONS: (Optional)

- Dual Schenck stainless steel strain gage load cells. No summing box required.
- Weigh modules available in 264 lbs. (120 kg), 441 lbs. (200 kg), 662 lbs. (300 kg) and 1,324 lbs. (600 kg) capacities.

PERFORMANCE:

- Volumetric accuracies of +/- 2 to 5% of feed rate setpoint typical at 2 sigma.
- Gravimetric accuracies of +/- 1/4% of feed rate setpoint typical at 2 sigma.

NOTE: Laboratory testing to determine specific material feeding accuracy is recommended and available from Schenck AccuRate.

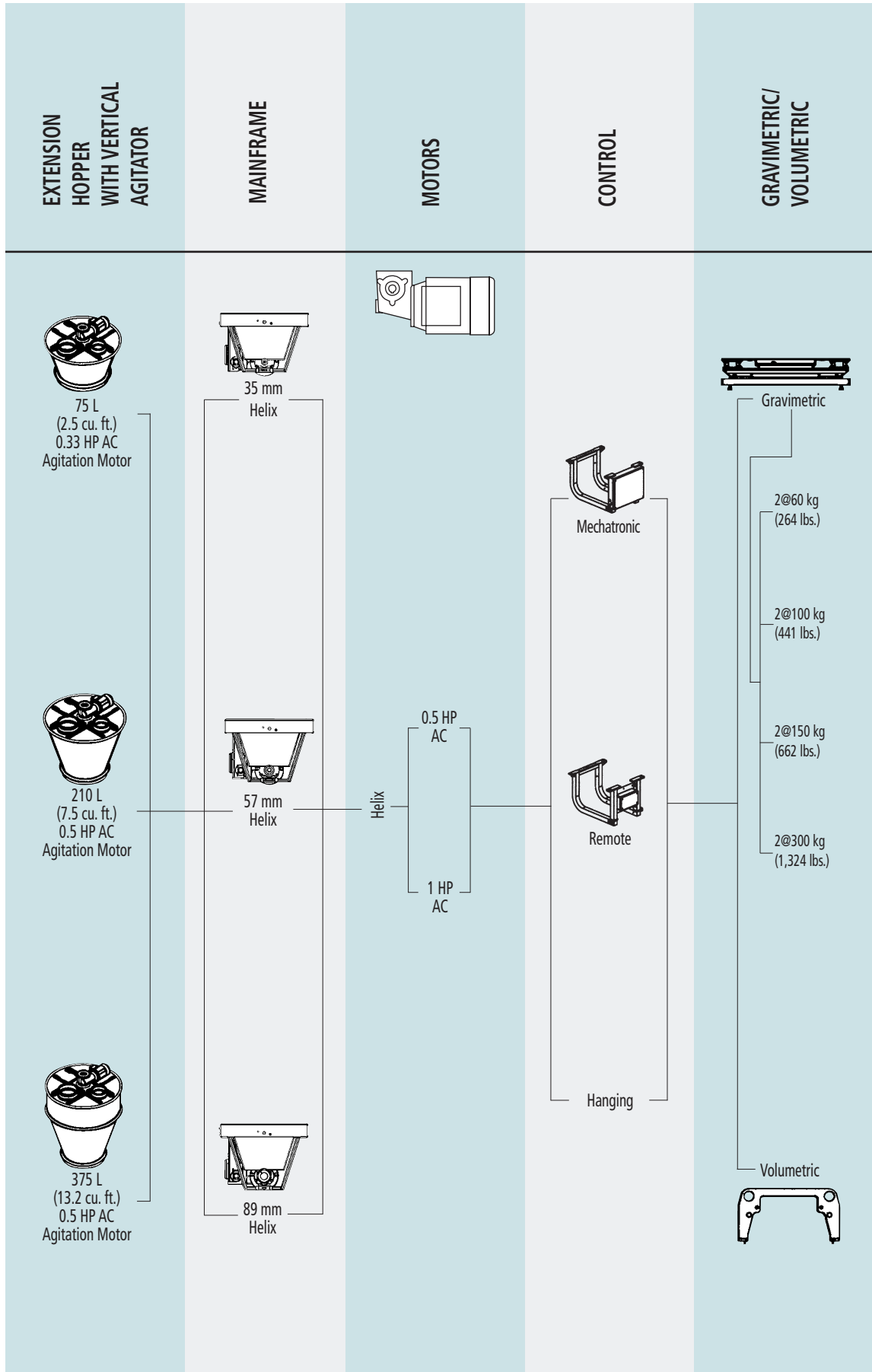
For more information, please contact us at 1-800-558-0184 or Fax: 262-473-4384

E-mail: mktg@accuratefeeders.com

Web site: www.accuratefeeders.com

MECHATRON® "MS" Feeder

Specifications



A FEEDER YOU CAN QUICKLY RECONFIGURE, CLEAN OR SERVICE FROM THE NON-PROCESS SIDE.



1 All components are accessible from the rear of the feeder instead of the discharge side. Simply loosen bolt.



2 Motor and drive assembly swings back for complete access to all internal components for easy cleaning, reconfiguration or maintenance.



3 For easy removal of the helix, loosen the nuts of the three screws on the back of the coupling bell, allowing for fast helix style, and diameter changes.



4 Release band clamp for easy hopper removal.



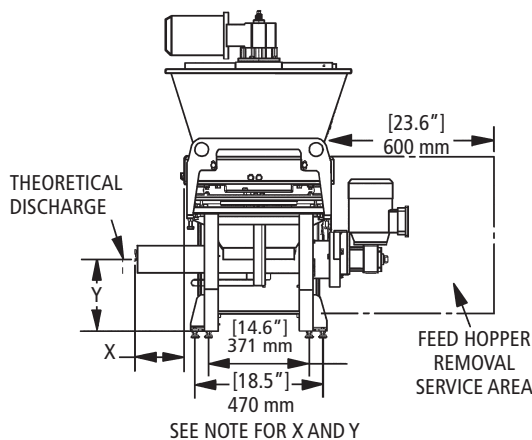
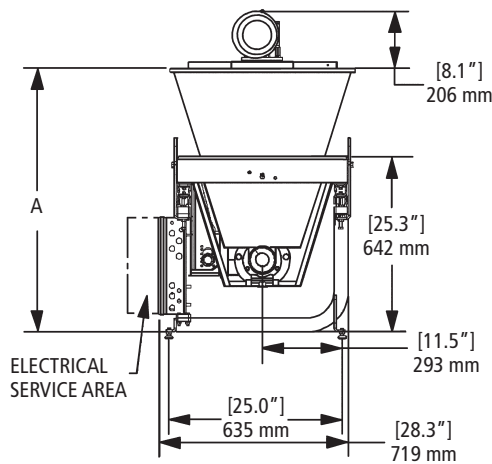
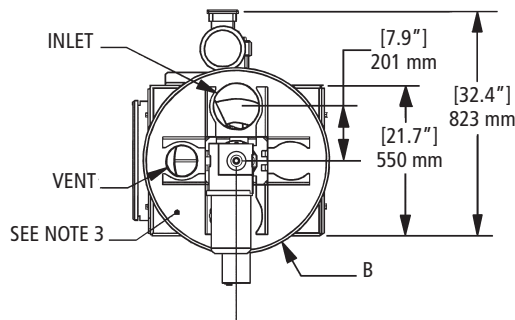
5 Hopper slides out for easy cleaning, replacement or maintenance.



6 Replace feed hopper, reposition motor and drive assembly, tighten bolt and you're ready to run – all in under two minutes.

MECHATRON® "MS" Feeder

Specifications



NOTE: Dimensions subject to change without notice.
Please contact sales for detailed drawings.

FEEDER (Dead Load)

WEIGHT	HOPPER CAPACITY
136 lbs. (62 kg)	1.2 cu. ft. (35 L)

EXTENSION HOPPERS

75 L	16 lbs. (7 kg)	2.5 cu. ft. (75 L)
210 L	28 lbs. (13 kg)	7.5 cu. ft. (210 L)
375 L	55 lbs. (25 kg)	13.2 cu. ft. (375 L)

COVERS

75 L	47 lbs. (21 kg)
210 L	68 lbs. (31 kg)
375 L	70 lbs. (32 kg)

TOTALS

Feeder + 75 L + cover	199 lbs. (90 kg)	
Feeder + 210 L + cover	232 lbs. (105 kg)	
Feeder + 375 L + cover	261 lbs. (118 kg)	
Stand + Feeder + 75 L + cover	252 lbs. (114 kg)	3.7 cu. ft. (110 L)
Stand + Feeder + 210 L + cover	285 lbs. (129 kg)	8.7 cu. ft. (245 L)
Stand + Feeder + 375 L + cover	314 lbs. (142 kg)	14.4 cu. ft. (410 L)

NOTES:

- Distance from front face of feeder (X) and discharge height (Y) are variable depending on helix diameter:

Helix Diameter Inch (mm)	X Inch (mm)	Y Inch (mm)
1.38 (35)	8.25 (210)	11.42 (290)
2.25 (57)	7.00 (178)	11.03 (280)
3.5 (89)	7.00 (178)	10.35 (263)

- System scale capacity:

Total (2 Load Cells)	
264 lbs. (120 kg)	
441 lbs. (200 kg)	
662 lbs. (300 kg)	
1,324 lbs. (600 kg)	

- Cover is available in auto refill (shown), manual refill, or with no cover.
Cover may be rotated up to 360° to meet application requirements.
Standard inlet and vents:

	2.5 cu. ft. ext. hopper	7.5 & 13.2 cu. ft. ext. hopper
U.S.	6.63" Inlet - 4.5" Vent	8.63" Inlet - 6.63" Vent
Europe	150 DN Inlet - 100 DN Vent	200 DN Inlet - 150 DN Vent

- Motors available: .5 HP (.37 kW) or 1 HP (.75 kW), TEFC, IP-55.
Meets NEMA MG-1 (parts 30 & 31).

- Electrical service requirements:

230V, 1 or 3 phase, 18.0 amps full load current, 50/60 Hz	
- or -	
460V, 3 phase, 10.4 amps full load current, 50/60 Hz	
FLA: 0.5 HP (.37 kW) = 5.0 amp	
1 HP (.75 kW) = 9.0 amp	
15.0 amp service is recommended for each motor	

EXTENSION HOPPER DIMENSIONS

Capacity	Dim "A"	Dim "B"
2.5 cu. ft. (75 L)	38" (965 mm)	26.8" (680 mm)
7.5 cu. ft. (210 L)	50.1" (1,273 mm)	34.2" (869 mm)
13.2 cu. ft. (375 L)	62" (1,573 mm)	34.2" (869 mm)